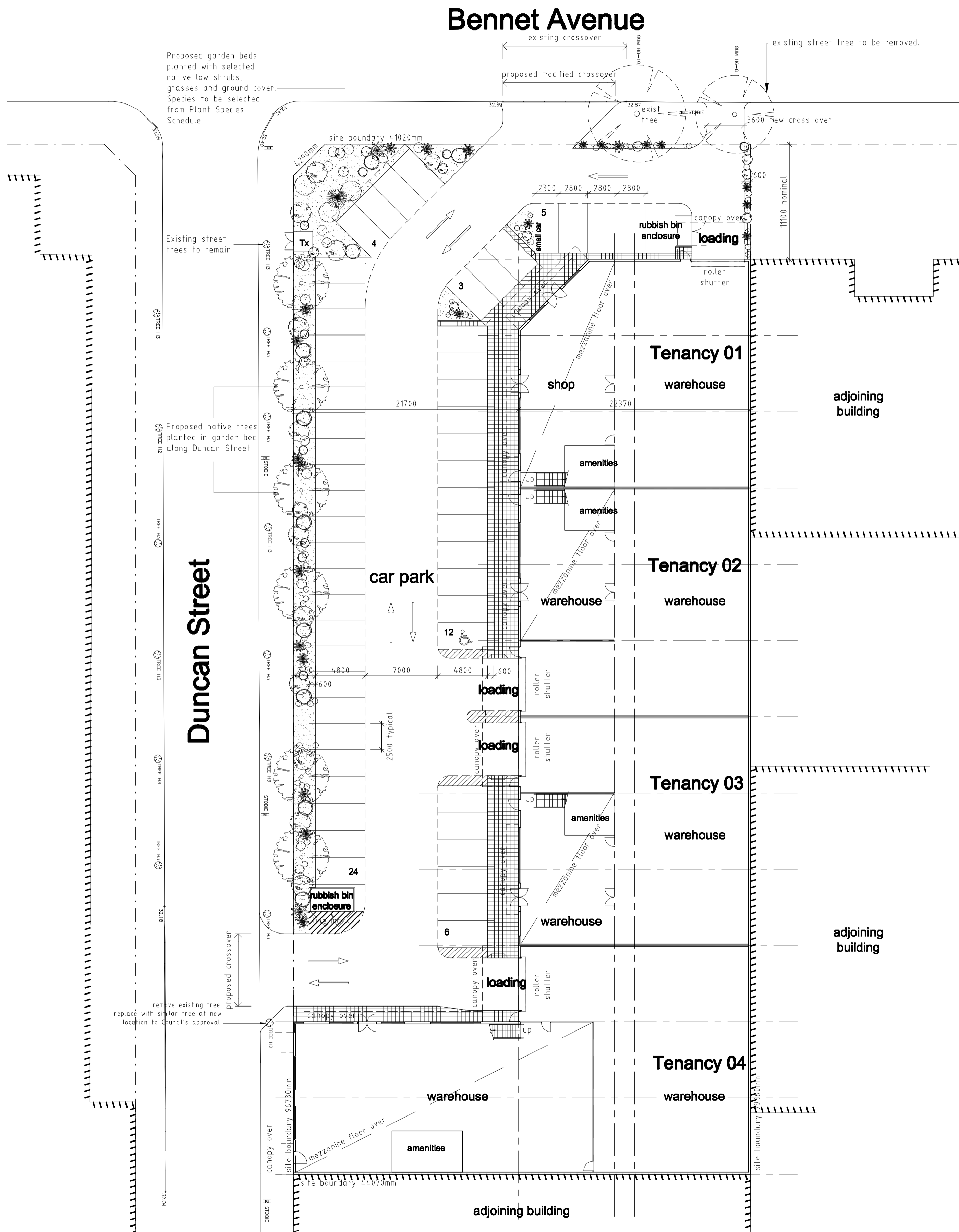
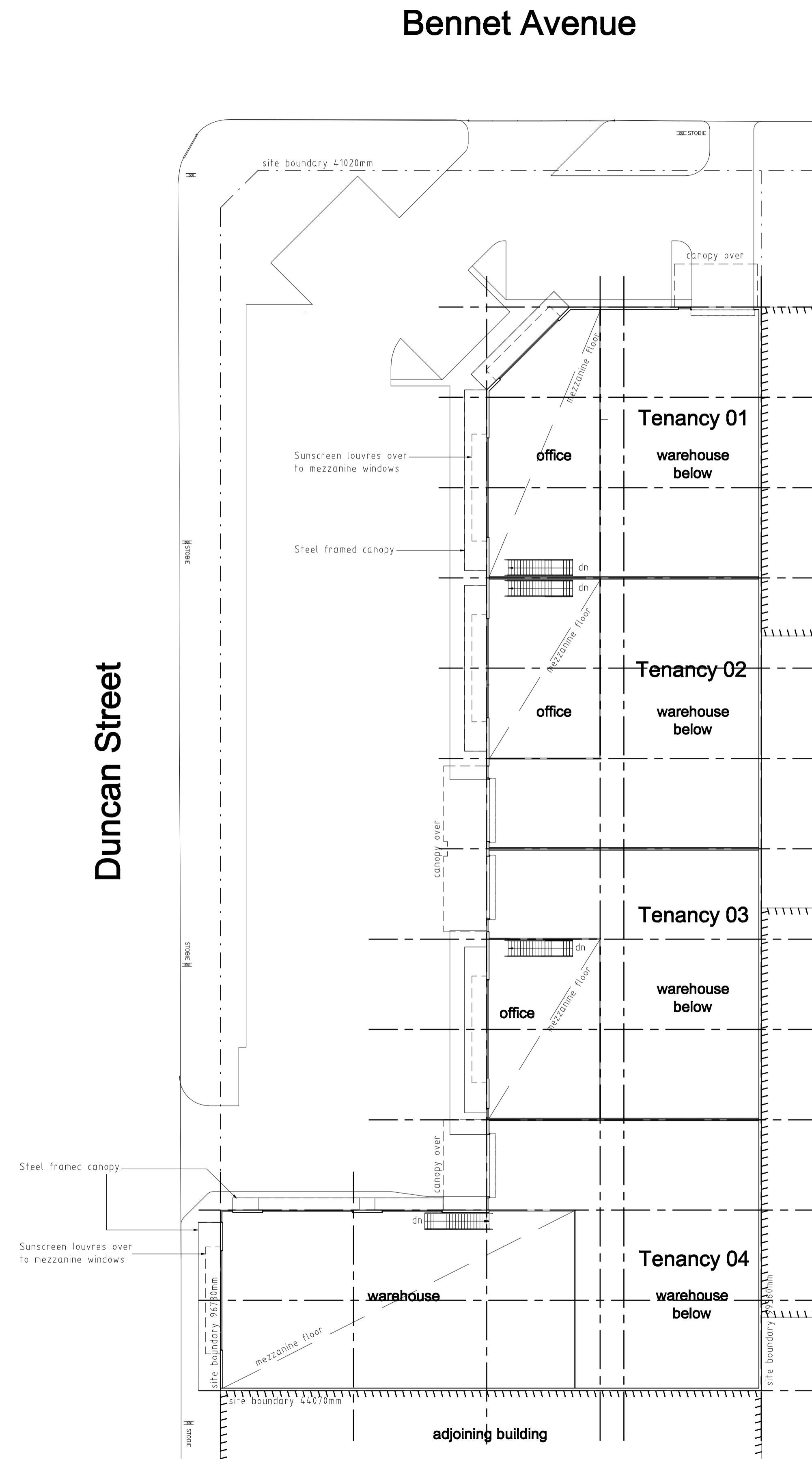


**Proposed redevelopment
20 Bennet Avenue, Melrose Park, SA.**

AMENDMENTS			
ISSUE	REMARKS	DATE	INT.
A	planning application issue	11/2007	KKTA
B	planning application issue - areas and car park updated	03/2008	KKTA
C	planning application issue - updated	07/2008	KKTA



ground floor plan (FFL @ RL 33.00)
SCALE 1:250 (A1)



mezzanine floor plan (FFL @ RL 36.60)
SCALE 1:250 (A1)

Proposed gross ground floor building area = 2270sqm approximate.
Site area = 4374sqm approximate.
Site coverage = 51.90% approx.
car parking = 64 spaces total.

Plant Species Schedule		
Type	Common Name	Botanical Name
trees	golden wattle	acacia pycnantha
low shrubs	berry saltbush	atriplex semibaccata
	common fringe myrtle	calytrix tetragona
	rock correa	correa glabra
	short leafed bluebush	malraena brevifolia
grasses	silky bluegrass	dichanthium sericeum
	fox tail mulga grass	neurachne alopecuroides
	thick stemmed tussock grass	poa crassicaudex
ground covers	lagoon saltbush	atriplex suberecta

Plant species selected from the City of Mitcham 'Plains Planting Guide'

PRINCIPAL
DS Smith Co Pty Ltd ATF Seymour-Smith Family Trust
20 Bennet Avenue, Melrose Park, SA 5039

PROJECT MANAGER
Boscalini Commercial
P.O. Box 3586, Newwood SA 5067

TOWN PLANNER
MasterPlan
33 Carrington Street, Adelaide, SA 5000

TRAFFIC CONSULTANT
Frank Slow & Associates
P.O. Box 255, Kensington Park, SA 5086

ARCHITECT
K. KYUN TAI ARCHITECTS PTY. LTD.
11/11A Victoria Square
ADELAIDE, SOUTH AUSTRALIA, 5000
Telephone: (08) 8410 8022 Facsimile: (08) 8410 8122 Email: admin@kta.com.au

Proposed redevelopment
20 Bennet Avenue, Melrose Park, SA
(C/T 5086/663, Allotments 5, 6, 7, 8, DP 1614, and 35 FP 10700)

DRAWING TITLE
Plans

DRAFTER KKTA	DESIGNER KKT	PROJECT DIRECTOR
DATE 10/2007	SCALE 1:250	CAD FILE NO. 9291
DRAWING NUMBER 9291/DA01	ISSUE C	

DO NOT SCALE
NOT FOR CONSTRUCTION

Contractor must verify all dimensions on site before commencing any work or preparing shop drawings.
Any work related to work shown on this drawing must be detailed and approved before proceeding.
© Copyright 2007 K. KYUN TAI ARCHITECTS PTY. LTD.
This drawing may not be reproduced or stored in a retrieval system without the prior written consent of K. Kyun Tai Architects.